

Polarization Maintaining Cables

Innovative

- Proprietary assembly procedures
- IL and ER testing at the design wavelength
- Proprietary curing for high extinction ratios

Reliable

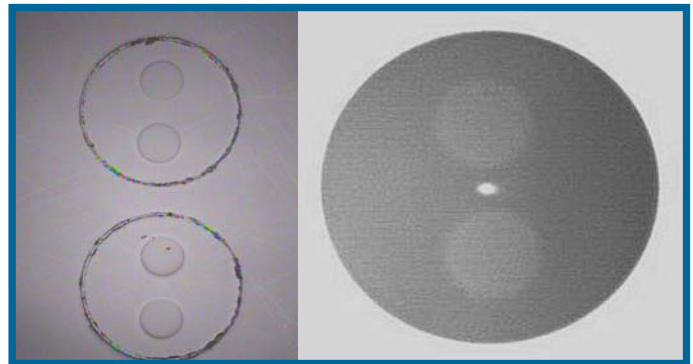
- 100% Testing of Insertion Loss, Return Loss, Extinction Ratio, Endface Geometry and Polish Quality
- Built in the USA with US and Japanese components
- Continuously improving upon procedures that were started over 15 years ago

Responsive

- Fast quotations for custom cables
- Small quantity orders ship in two days

Performance

- Low Insertion Loss
- High Return Loss
- High Extinction Ratios
- 100% Testing
- Custom wavelength cables available



Coastal Connections custom engineers polarization maintaining cables to the tightest specifications in the industry. Our dedicated assemblers have 55 years of combined experience terminating a large variety of cables. We use the best polishers, fixtures, and test equipment in the industry for reliability and consistency. We use proprietary processes that were developed in a multi-million dollar military program to build the most reliable connector possible.

Polarization Maintaining Cables

Connectors

Connectors	FC	LC	SC	FC Ferrule	Ferrule Stick	Glass Capillary
Polish	APC UPC	APC UPC	APC UPC	APC UPC	APC UPC	APC UPC
Type	Screw on	Push/ Pull	Push/ Pull	2.5mm OD With Flange	2.5mm OD 10.5mm Long	1.8mm & 2.5mm OD 10mm Long

Fibers

Fiber	PM 1550	PM 1300	PM 980	PM 850	PM 630	PM 480	PM 400
Cut-Off (nm)	1290-1470	1100-1290	800-970	650-800	500-620	400-470	330-400
Mode Field (um)	10.5	9.5	6.6	5.5	4.5	4.0	3.7
Attenuation (dB/km)	≤1.0	≤1.0	≤2.5	≤3.0	≤12	≤30	≤50

Cables

OD	250um	400um	900um Tight	900um Loose	2mm PVC Loose	2mm PVDF Loose	3mm PVC Loose	3mm Steel	3mm Steel & PVC
Jacket Material	Acrylate	Acrylate	Acrylate + Hytrel (Nylon) Or Silicone	Hytrel (Nylon) or PTFE (Teflon)	PVC	PVDF	PVC	Stainless Steel	Stainless Steel +PVC
Strength Member	-	-	-	-	Kevlar	Kevlar	Kevlar	Kevlar	Kevlar

Performance

Wavelength	1550	1310	980	1060	850	780	630	480	400
Insertion Loss (dB)	≤0.25 (≤0.1 Avail)	≤0.35 (≤0.15 Avail)	≤0.35 (≤0.15 Avail)	≤0.35 (≤0.15 Avail)	≤0.50 (≤0.25 Avail)	≤1.0 (≤0.75 Avail)	≤1.0	≤1.5 (≤1.0 Avail)	
Return Loss (dB)	APC ≥65 PC ≥50	APC ≥65* PC ≥50*	APC ≥65* PC ≥50*	APC ≥65* PC ≥50*	APC ≥65* PC ≥50*	APC ≥60* PC ≥50*	APC ≥60* PC ≥45*	APC ≥60* PC ≥45*	
Extinction Ratio (dB)	≥25 (30 Avail.)	≥25 (30 Avail.)	≥25 (30 Avail.)	≥25 (30 Avail.)	≥25	≥20	≥20	≥20	
Key to Fiber Alignment	+/- 2 Degrees	+/- 2 Degrees	+/- 2 Degrees	+/- 2 Degrees	+/- 2 Degrees	+/- 2 Degrees	+/- 2 Degrees	+/- 2 Degrees	+/- 2 Degrees

* Return loss on <1060nm fiber is measured at 1310nm